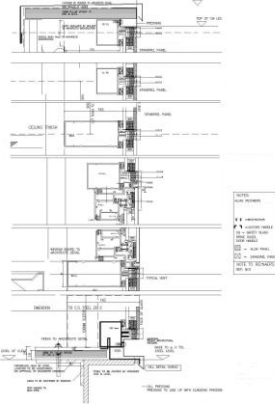




View of Reflective Glass Clad box



Detailing of screen

Services:

- **Design:** Detail design and interface resolution
- **Technical advice:** Face glass aesthetics, Façade risk management, Ventilation strategy, Daylight/Shading Strategy, Value Engineering ,
- **Quality control:** Site installation monitoring

Products:

- Architectural Cladding
- Brise Soleil / Solar Shading
- Composite Cladding
- Stick Curtain Walling
- Structural Sealant Glazing (SSG)

KAL Kitchens, Citywest, Dublin

This distinctive form of façade solution for KAL Kitchens has transformed architectural intent into corporate identity. This reflective glass clad box, 8m in height, 40m long and 14m wide runs at a dynamic angle to the composite clad rectangular warehouse, projecting and cantilevering over the main entrance and natural landscape area.

Special attention has been given to each detail in respect of reducing the risk of thermal bridging and condensation. Site specific method statements were prepared to ensure workmanship achieved acceptable levels of air and water tightness. The use of solar control glass offers privacy to the internal activities whilst becoming a changing external active mirror to the external landscape depending on daylight.

At **ADT FA+CE** our ethos is to balance architectural intent through intelligent academic and practical robust detailing. Our understanding of construction risks throughout procurement provides our Clients with a unique confidence in our continued ability to build facades collaboratively.

The following are the Façade Systems suppliers we worked with on this project:

