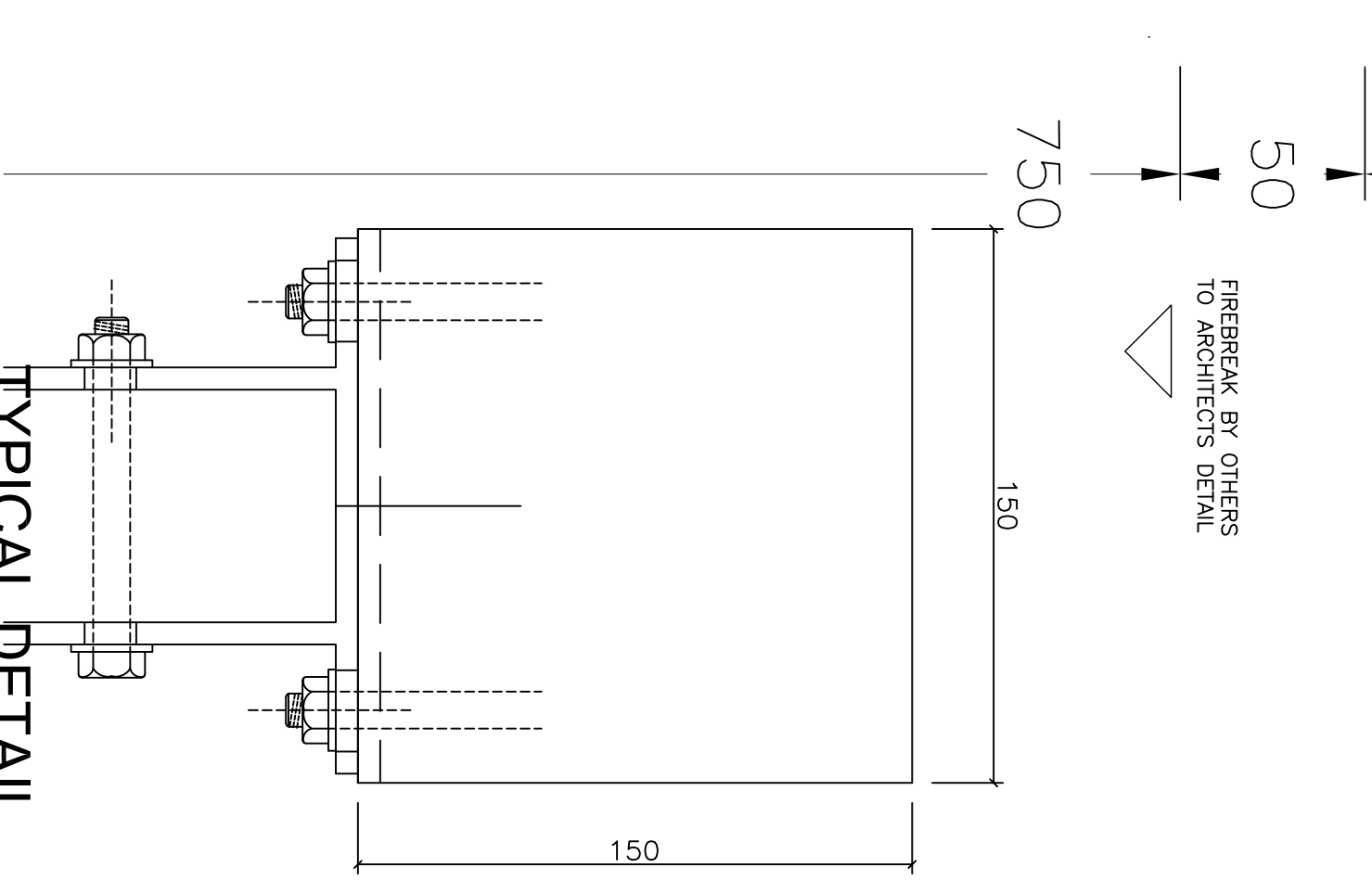
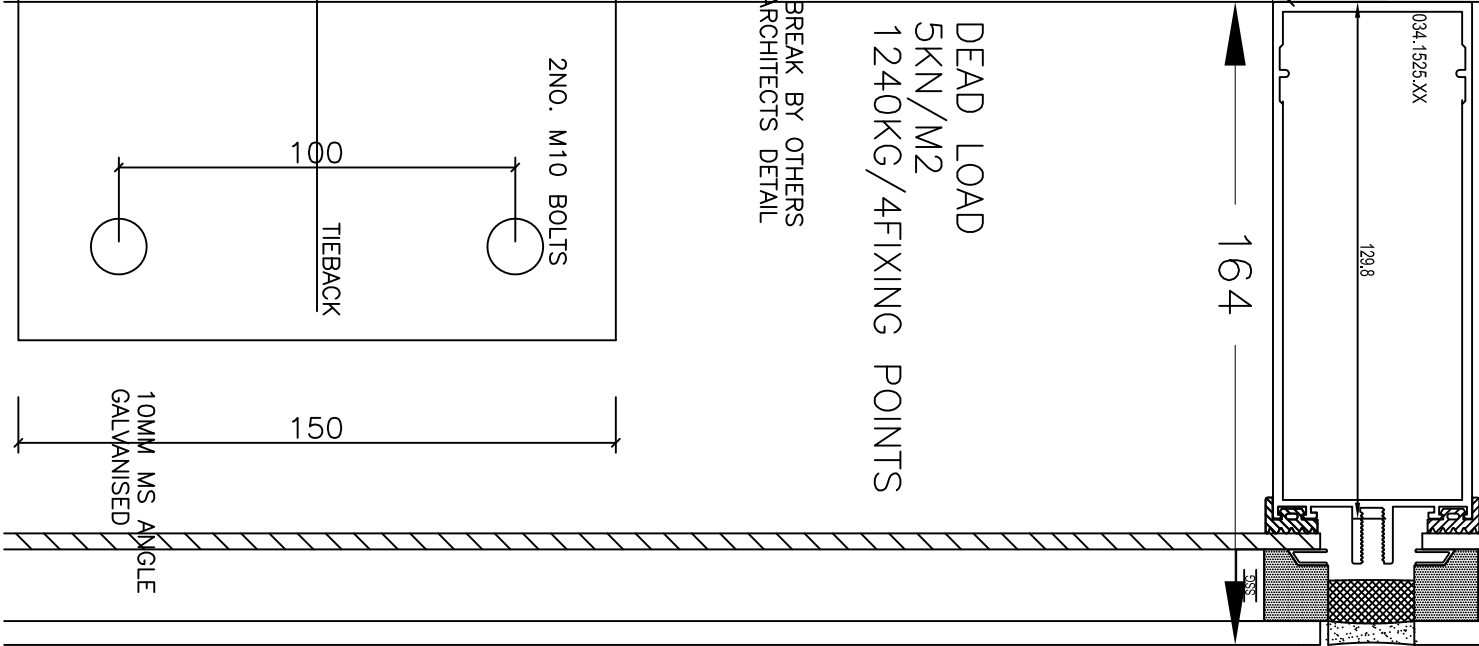
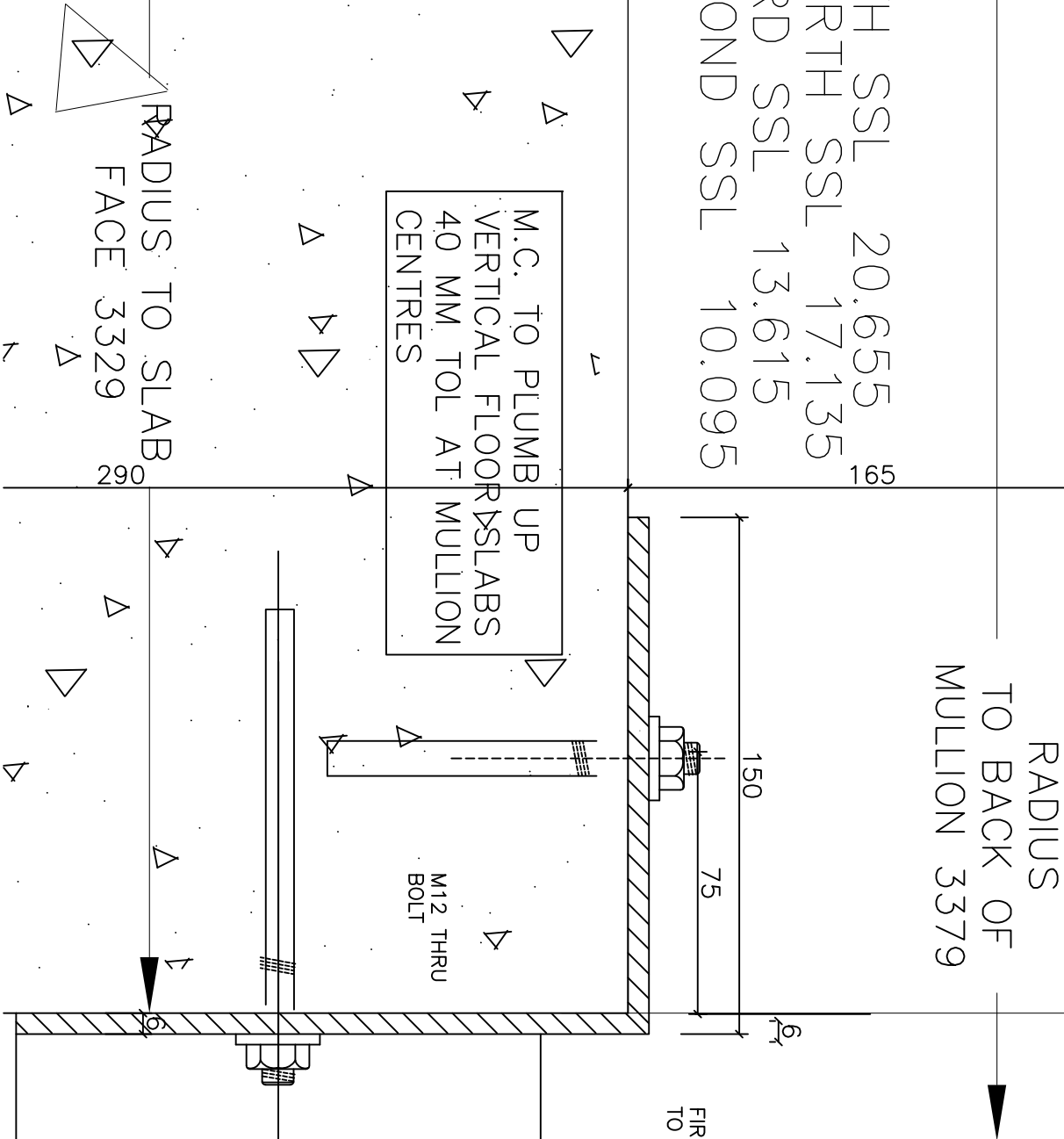


FIFTH FFL 20.820
FOURTH FFL 17.300
THIRD FFL 13.780
SECOND FFL 10.260

FIFTH SSL 20.655
FOURTH SSL 17.135
THIRD SSL 13.615
SECOND SSL 10.095



AT FIRST, SECOND
THIRD & FOURTH
FLOOR 1:2

ADT Facade Solutions

THE MILLENNIUM CENTRE SCR DUBLIN TEL:04531226 FAX:04531222 E-MAIL:info@adtwin.com

Date Architect HAMILTON YOUNG

Job No Project FIVE LAMPS AMEN STREET

Scale 1:2 Title TIEBACK DETAIL Rev A

Drawn SCHEDULE 01-DRG6 Shop FOR APPROVAL

Notes
THIS DRAWING TO BE READ IN CONJUNCTION WITH RELEVANT ARCHITECT DRAWINGS

BUILDER TO REFER TO ADT GLASS AND CLEANING SPECIFICATION

NOTE: PERMAVENTS WILL ALWAYS ALLOW TRICKLE OF AIR WHEN CLOSED AND CAN CREATE NOISE UNDER WINDY CONDITIONS

Copyright of ADT Facade Solutions

A3